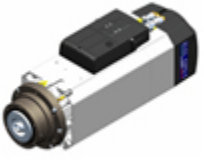


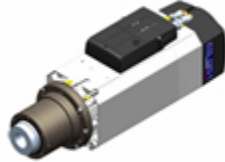
**FROM 11 - 16 KW**



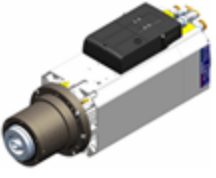
**ES951 - Kw 11-S1/13,2-S6 - HSK  
F63 - electric fan - short nose**  
max speed 24.000rpm - rated speed  
12.000rpm



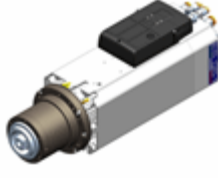
**ES951 - Kw 11-S1/13,2-S6 - ISO30  
- electric fan - short nose**  
max speed 24.000rpm - rated speed  
12.000rpm



**ES951 - Kw 11-S1/13,2-S6 - ISO30  
- electric fan - long nose**  
max speed 24.000rpm - rated speed  
12.000rpm



**ES951 - Kw 16-S1/19,2-S6 - HSK  
F63 - liquid - long nose**  
max speed 24.000rpm - rated speed  
12.000rpm



**ES951 - Kw 16-S1/19,2-S6 - HSK  
E63 - liquid - long nose**  
max speed 18.000rpm - rated speed  
8.000rpm



**ES951 - Kw 25-S1/30-S6 - HSK F63  
- liquid - long nose**  
max speed 18.000rpm - rated speed  
10.000rpm



**ES951 - Kw 25-S1/30-S6 - HSK E63  
- liquid - long nose**  
max speed 18.000rpm - rated speed  
10.000rpm